
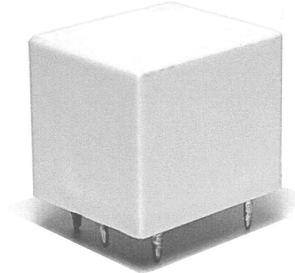


# Greenwich Electronics, Inc.

## GP6 / GP6H Series

- Light to heavy duty (5-15A)
- Low coil consumption
- High inrush capacity
- Industry standard footprint
- Approvals:  (E197070)
- Applications: heavy duty lighting, heaters, industrial controls, appliances, general purpose



### COIL DATA

#### *5A and 7A contact rating*

Nominal Voltage (DC)	Nominal Coil Current (mA) (± 10% at 20°C)	Coil Resistance (Ω) (± 10% at 20°C)
3	120	25
6	60	100
9	40	220
12	30	400
24	15	1600
48	8	6400

#### *12A and 15A contact rating*

Nominal Voltage (DC)	Nominal Coil Current (mA) (± 10% at 20°C)	Coil Resistance (Ω) (± 10% at 20°C)
3	150	20
6	75	80
9	50	180
12	38	320
24	19	1280
48	9	5120

Pick-up Voltage	≤75% nominal
Drop-out Voltage	≥10% nominal
Max. Coil Voltage	130% nominal
Coil Consumption	<b>nil:</b> ~ 0.36W (5A / 7A), <b>L:</b> ~ .45W (12A / 15A)

# Greenwich Electronics, Inc.

## Contact

Configuration	<b>A:</b> 1 form A (SPST-NO), <b>B:</b> 1 form B (SPST-NC), <b>C:</b> 1 form C (SPDT)
Material	Silver (Ag) alloy
Rated Load	<b>5:</b> 5A@28VDC / 110VAC <b>7:</b> 7A@28VDC / 110VAC <b>12:</b> 12A@28VDC / 110VAC <b>15:</b> 15A@28VDC / 110VAC <b>HP:</b> ½hp@120VAC
Max. Carry Current	<b>5:</b> 5 <b>7:</b> 7 <b>12:</b> 12 <b>15:</b> 15
Max. Switching Voltage	125VDC / 250VAC
Max. Switching Current	20A
Max. Switching Power	420W, 1800VA

## CHARACTERISTICS

Contact Resistance	Max. 50mΩ
Operate Time	≤15ms
Release Time	≤5ms
Insulation Resistance	100MΩ (@500VDC)
Dielectric Strength:	
• Between coil and contacts	<b>GP6:</b> 1500VAC - 50Hz / one minute <b>GP6H:</b> 2500VAC - 50Hz / one minute
• Between open contacts	750VAC - 50Hz / one minute
Vibration Resistance	10-55Hz, 1.5mm, double amplitude
Shock Resistance	10g (functional)
Ambient Temperature	
• Storage	-40°C to 70°C
• Operate	-40°C to 70°C
Relative Humidity	98%@35°C
Life Expectancy:	
• Mechanical	1 x 10 <sup>7</sup>
• Electrical	1 x 10 <sup>5</sup> (at rated load)
Weight	Approx. 15 grams

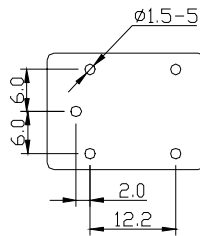
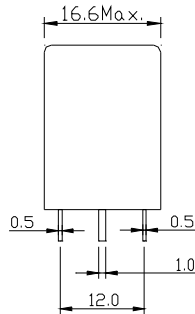
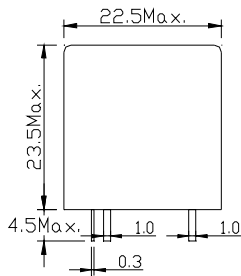
# Greenwich Electronics, Inc.

## ORDERING INFORMATION

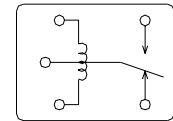
	<u>GP6</u>	-	<u>024</u>	-	<u>B</u>	<u>L</u>	<u>15</u>	<u>D</u>
	I		II		III	IV	V	VI
I.	Series	<b>GP6, GP6H</b>						
II.	Coil Voltage (VDC)	<b>003, 006, 009, 012, 024, 048</b>						
III.	Contact Configuration	<b>A</b> - 1 form A (SPST-NO), <b>B</b> - 1 form B (SPST-NC) <b>C</b> - 1 form C (SPDT)						
IV.	Coil Sensitivity	<b>nil</b> - standard (5 and 7A only), <b>L</b> - low sensitivity (12 and 15A only)						
V.	Contact Rating	<b>05</b> - 5A, <b>7</b> - 7A, <b>12</b> - 12A, <b>15</b> - 15A						
VI.	Package Type	<b>O</b> - Open frame, <b>D</b> - dust cover, <b>S</b> - Sealed						

## GP6 Series Dimensions and Schematics (in mm)

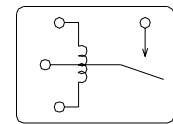
### GP6 – standard dielectric (1500VAC)



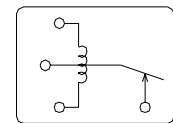
### Terminal arrangement and wiring diagram



SPDT – 1 form C



SPST-NO – 1 form A

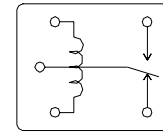
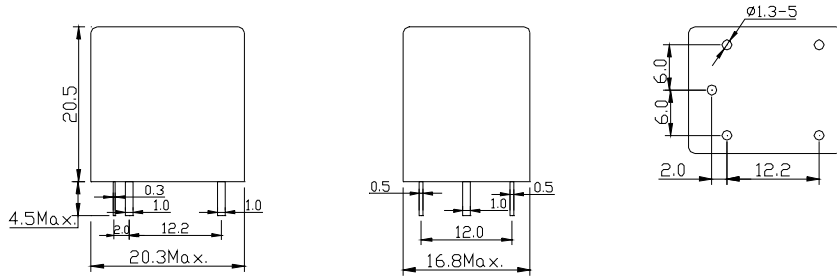


SPST-NC – 1 form B

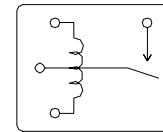
# Greenwich Electronics, Inc.

## GP6H – High dielectric (2500VAC)

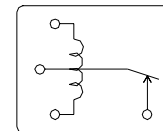
### Terminal arrangement and wiring diagram



SPDT - 1 form C



SPST-NO - 1 form A



SPST-NC - 1 form B